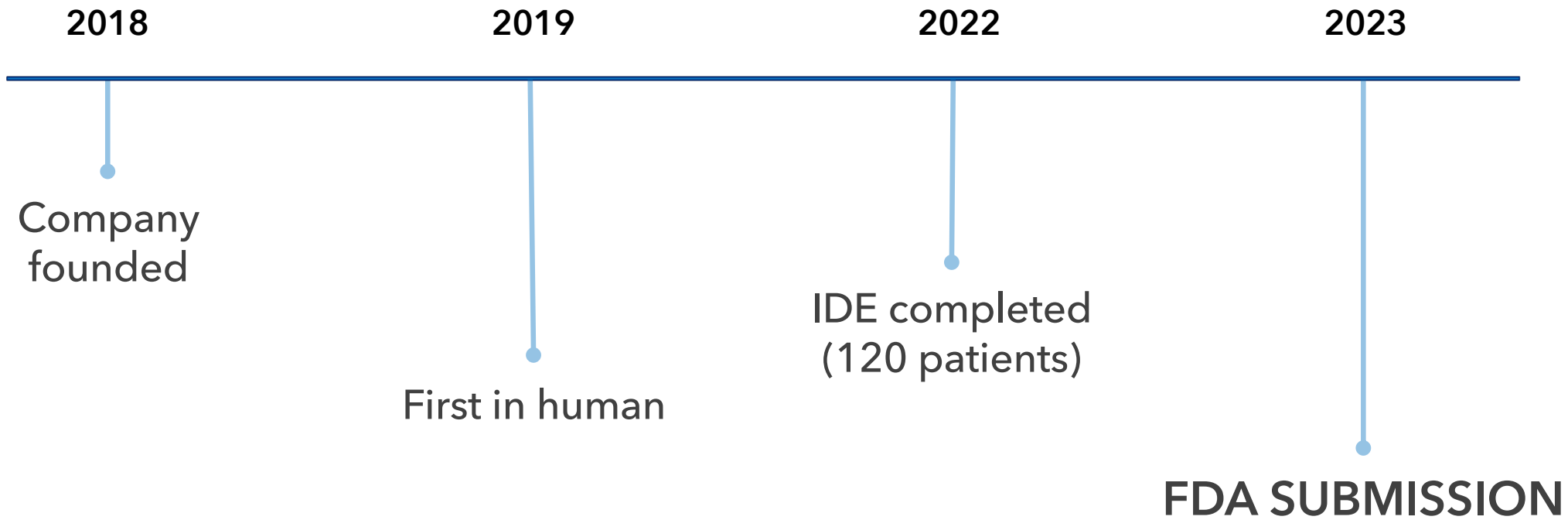


# Esophageal Deviation with Vacuum Suction & Deflection - *esolution* Device

Luis Aguinaga, MD, PhD, FESC, FACC  
CENTRO INTEGRAL DE ARRITMIAS  
TUCUMAN ARGENTINA



# Background



# Overview of device

## Intent

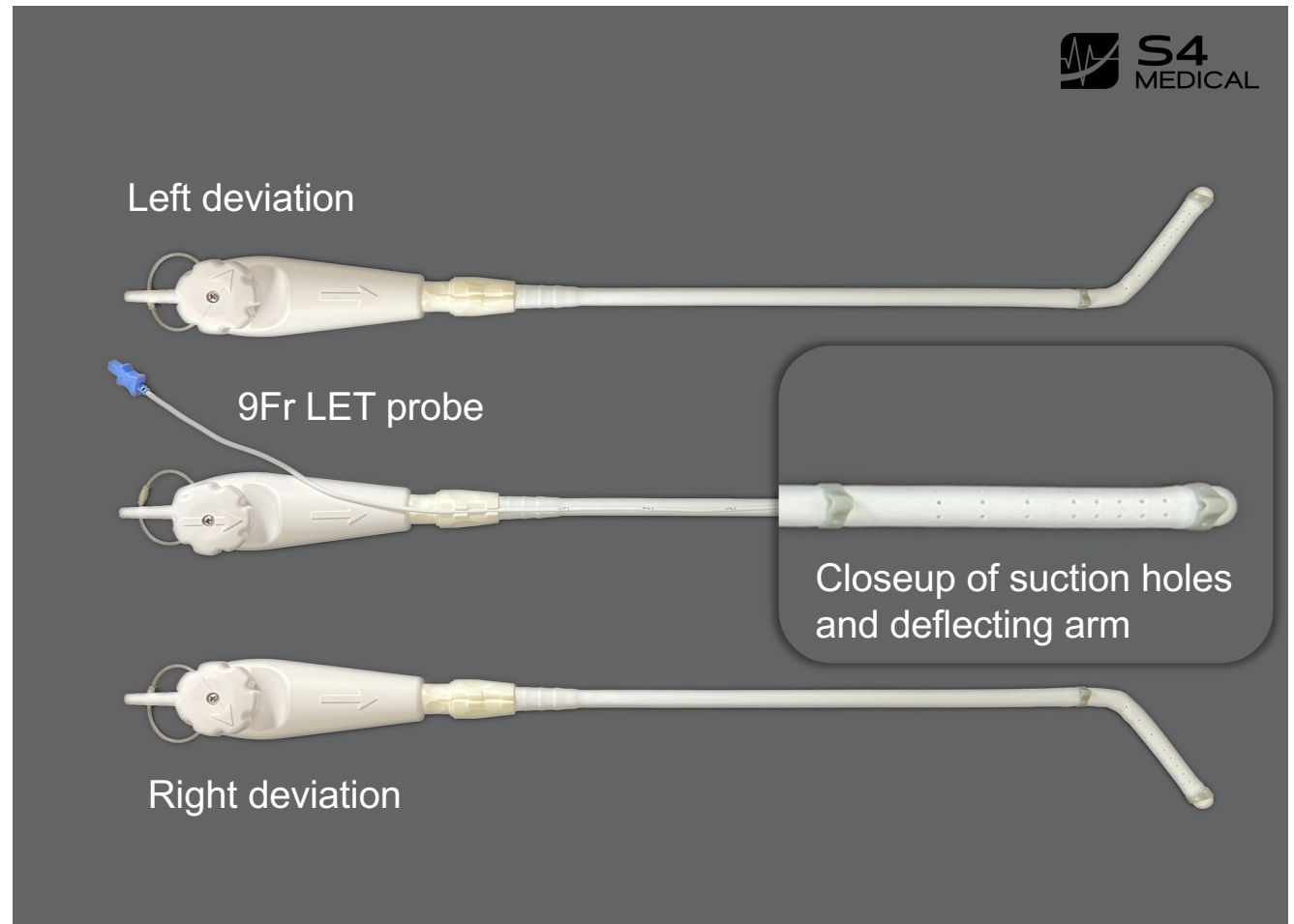
- Prevent thermal injury to esophagus during AF ablation
- Right/Left deviation with no trailing edge

## Design

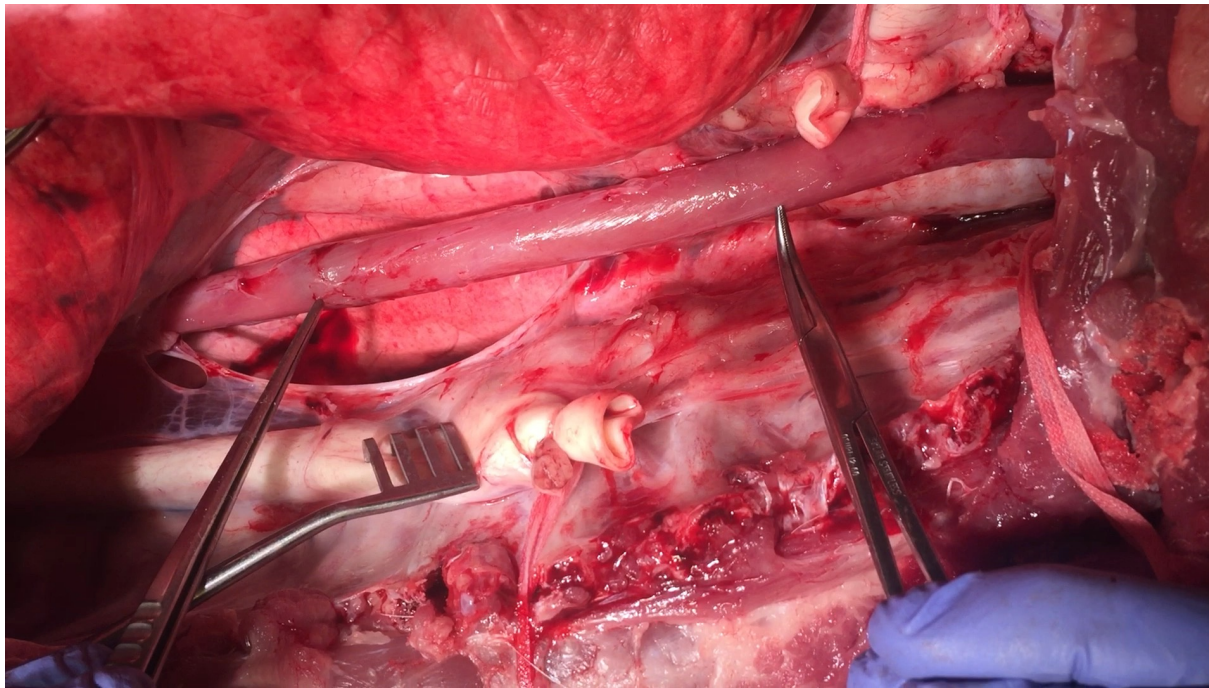
- TEE probe look/feel
- Simple, intuitive

## Benefits

- Safety
- Efficacy
- Efficiency
- Confidence

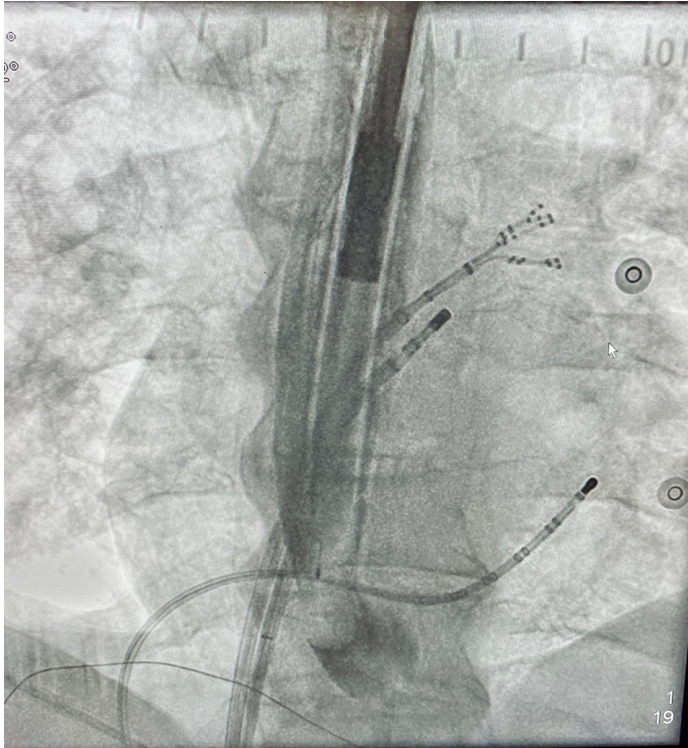


# e/solution device



## Key Concepts

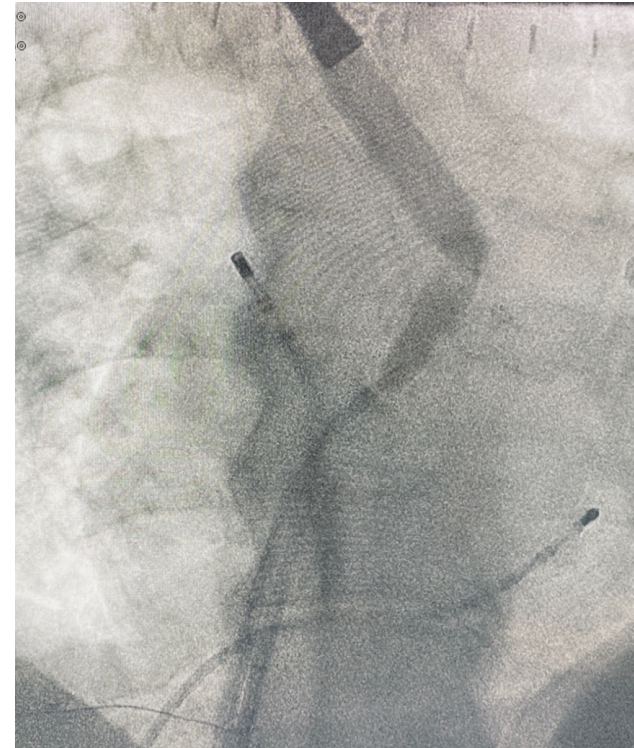
1. Mechanical deviation (to move esophagus)
2. Vacuum Suction (manages Trailing edge)

**A**

Undeviated  
Suction OFF

**B**

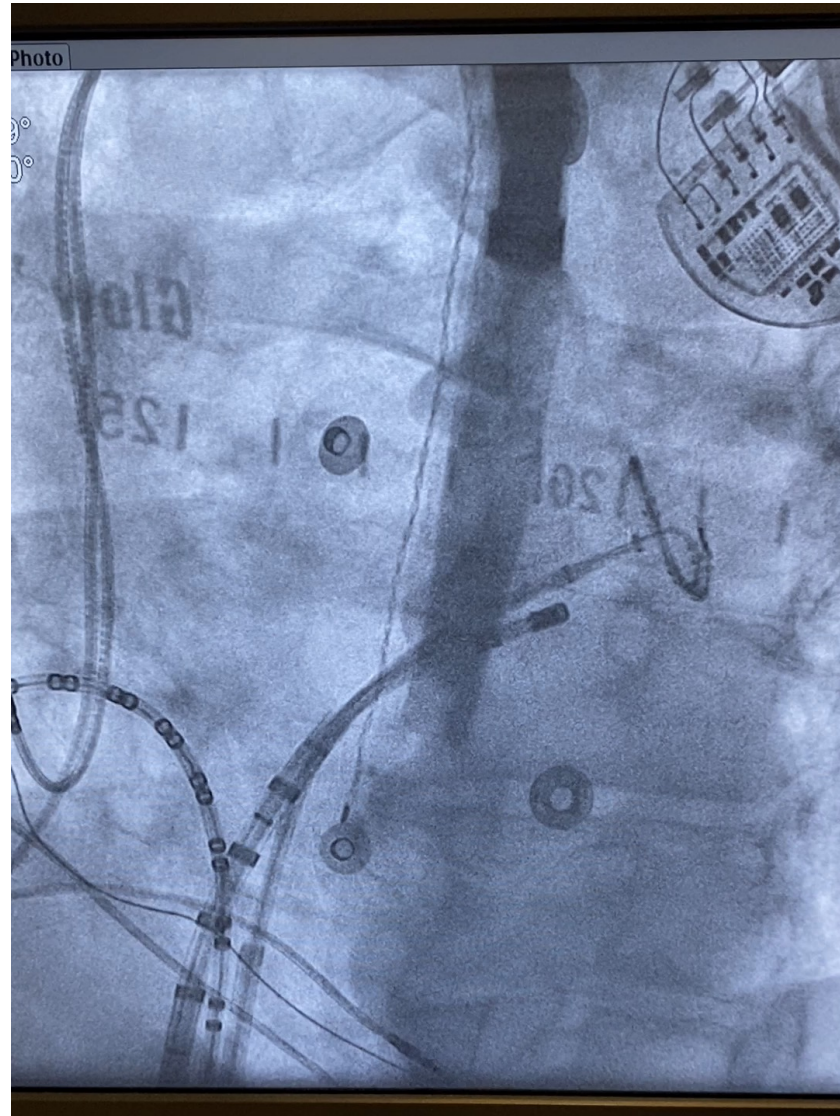
Right deviation  
Suction ON

**C**

Left deviation  
Suction ON

## Deviation video from study

*esolution* device moves  
esophagus to the right with  
RF catheter at LSPV



## Summary

**There is currently no FDA approved device for esophageal protection during AF ablation**

**First ever randomized, prospective, multi-center, double-blinded, endoscopy-based FDA study for an esophageal protection device**

- CONTROL (temp monitoring) vs
- DEVIATION (deviation + temp monitoring)

**Primary endpoint: Endoscopy after AF ablation procedure to assess for esophageal injury**

**Results will be presented at HRS 2023 - Saturday May 20<sup>th</sup>**